

CHAPTER

10

PARKING AND MOORING

INTENTIONALLY LEFT BLANK

**CHAPTER 10 - PARKING AND MOORING
LIST OF EFFECTIVE PAGES**

CHAPTER SECTION SUBJECT	PAGE	DATE
10-LOEP	1	Nov. 15/10
	2	Dec. 15/09
10-TOC	1	Nov. 15/10
	2	Dec. 15/09
10-00-00	1	Dec. 15/09
	2	Dec. 15/09
10-11-00	201	Nov. 15/10
	202	Dec. 15/09
	203	Dec. 15/09
	204	Dec. 15/09
10-12-00	201	Nov. 15/10
	202	Nov. 15/10
	203	Dec. 15/09
	204	Dec. 15/09
	205	Dec. 15/09
	206	Dec. 15/09
	207	Dec. 15/09
208	Dec. 15/09	
10-20-00	201	Nov. 15/10
	202	Nov. 15/10
	203	Dec. 15/09
	204	Dec. 15/09
10-30-00	201	Dec. 15/09
	202	Dec. 15/09
	203	Dec. 15/09
	204	Dec. 15/09
	205	Dec. 15/09
	206	Dec. 15/09

INTENTIONALLY LEFT BLANK

**CHAPTER 10 - PARKING AND MOORING
TABLE OF CONTENTS**

SUBJECT	CHAPTER SECTION SUBJECT	PAGE	EFFECTIVITY
PARKING AND MOORING - Description and Operation	10-00-00	1	
1. Description		1	
PARKING - Maintenance Practices	10-11-00	201	
1. General		201	
2. Parking		202	
STORAGE - Maintenance Practices	10-12-00	201	
1. General		201	
2. Storage		202	
3. Flyable Storage (7 days to 30 days)		202	
4. Prolonged Storage (30 Days to 3 Months)		203	
5. Indefinite Storage (More Than 3 Months)		206	
MOORING - Maintenance Practices	10-20-00	201	
1. Mooring		201	
STORAGE - Maintenance Practices	10-30-00	201	
1. General		201	
2. Preparation for Service (7 to 30 days)		201	
3. Preparation For Service (31 Days to 3 Months).		202	
4. Preparation For Service Indefinite Storage (More than 3 Months)		204	

EFFECTIVITY:

INTENTIONALLY LEFT BLANK

PARKING AND MOORING - DESCRIPTION AND OPERATION

1. Description

- A. When the airplane must be parked, stored or moored, three are the procedures to follow.

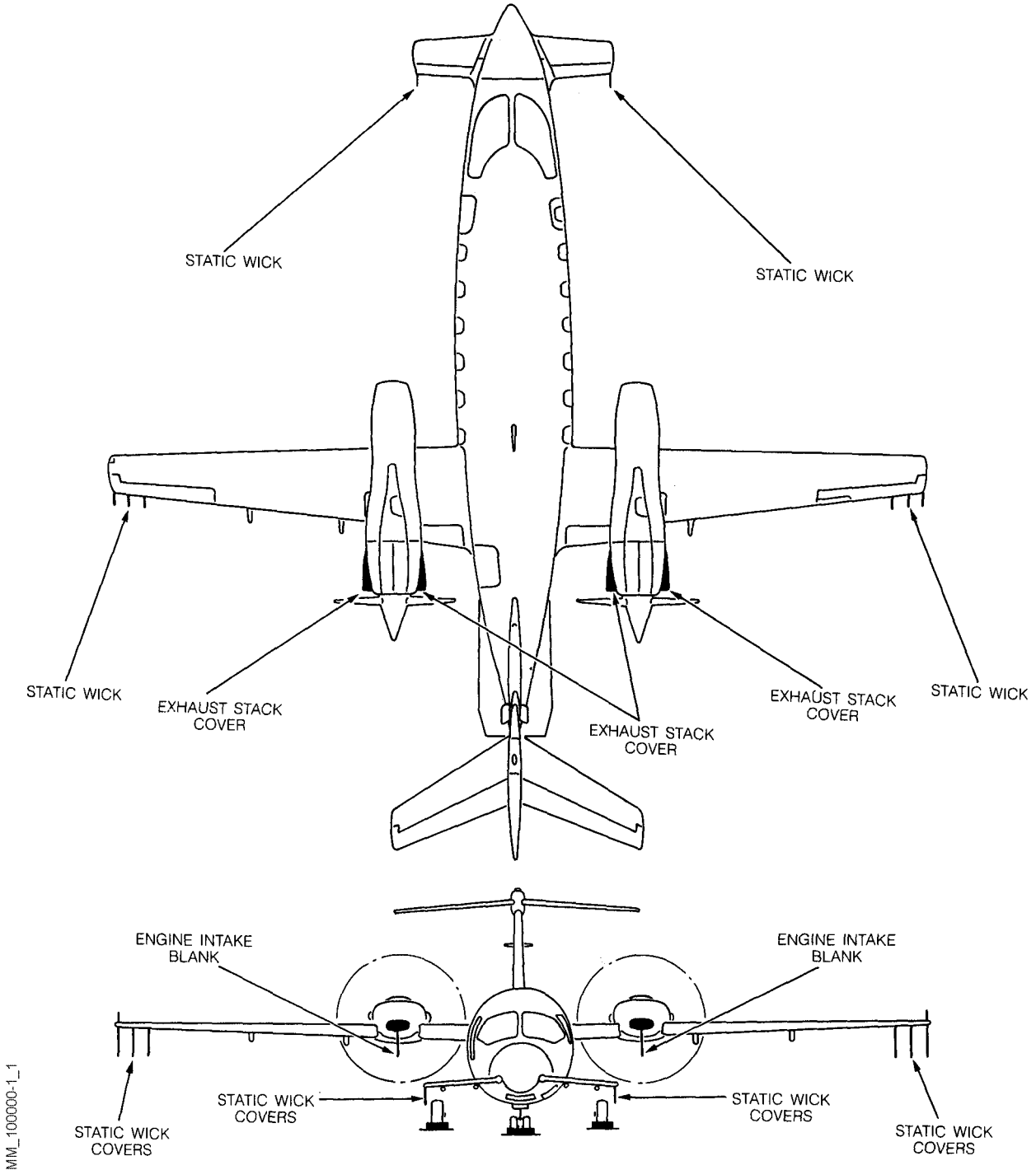


Fig. 1 (Sheet 1 of 2) - Parking Airplane

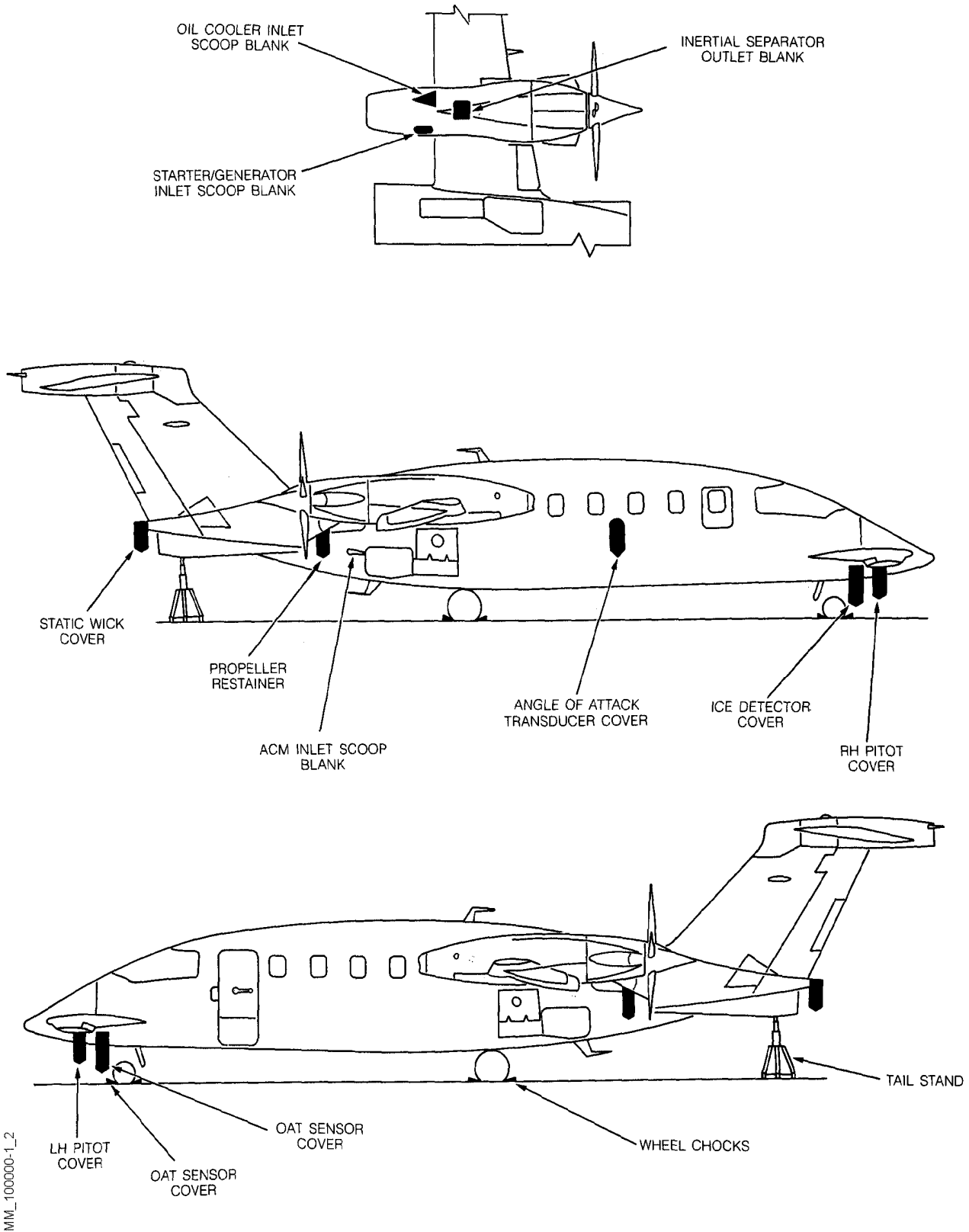


Fig. 1 (Sheet 2 of 2) - Parking Airplane

PARKING - MAINTENANCE PRACTICES

1. General

- A. Airplane parking consists of chocking the wheels, installing control gust locks, setting parking brake, attaching mooring cables and propeller restrainers and tail stand. Under normal weather conditions, the airplane may be parked and headed in a direction that will facilitate servicing without regard to prevailing winds.

CAUTION: IS STRONGLY RECOMMENDED TO MOORE THE AIRPLANE WHEN THE FOLLOWING CONDITIONS APPLY:

- WIND MORE THAN 20 KNOTS IS EXPECTED.
- AIRPLANE COMPLETELY REFUELED.

B. Tools and Equipment

NOMENCLATURE	PART NUMBER	MANUFACTURER
Pitot Tube Covers	80-909174-401	Piaggio
Ice Detector Cover	80-909174-401	Piaggio
OAT Sensor Cover	80-909174-401	Piaggio
AOA Transducer Cover	123-149	Teledyne Avionics
Propeller Restrainers	80-909168-401	Piaggio
Engine Intake Blanks	80-909152-401	Piaggio
Engine Oil Cooler Inlet Scoop Blanks	80-909171-401	Piaggio
Starter/Generator Inlet Scoop Blanks	80-909171-401	Piaggio
Inertial Separator Outlet Blank	80-909171-401	Piaggio
Exhaust Stack Covers	80-909170-401	Piaggio
Wheel Chocks	80-909135-401	Piaggio
Wheel Chocks	99-9028-6000	Tronair
Control Gust Locks	80-115324-801/803	Piaggio
Static Port Covers	80-909196-401	Piaggio
Mooring Pad (Fuselage)	80-909158-801	Piaggio
Mooring Pads (Wings)	80-909159-801	Piaggio
Mooring Cable (Fuselage)	80-909192-403	Piaggio
Mooring Cable (Wings)	80-909192-405	Piaggio
Ground Cable (Electrical)	Not specified	Piaggio
ENVIRO Inlet Scoop Blanks	80-909195-401	Piaggio
Nose Fan Outlet Blanks	Not specified	Piaggio
Tail Stand	80-909160-401	Piaggio
Static Wick Covers	80-909175-801	Piaggio

2. Parking

A. Procedure

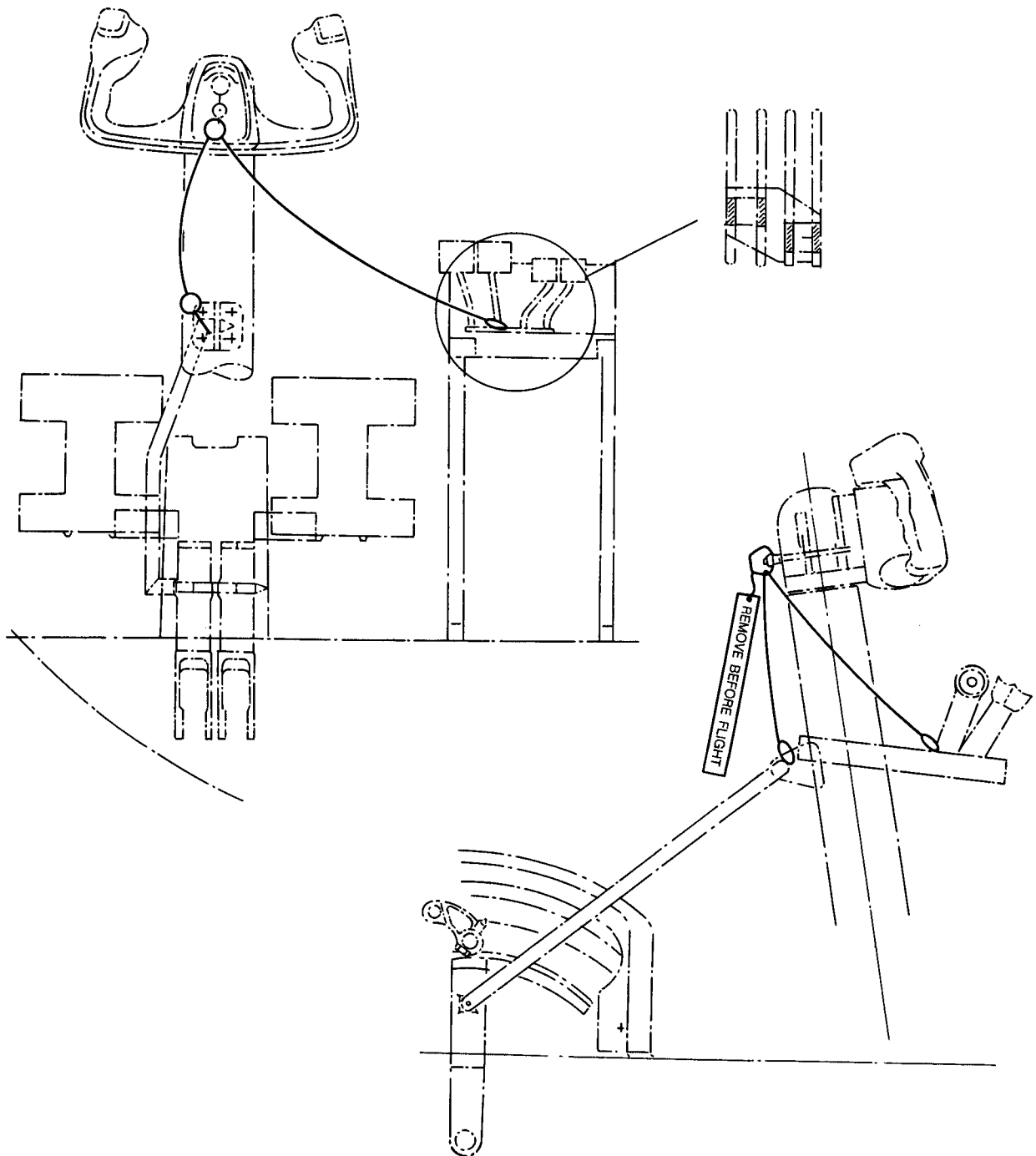
- (1) Position airplane on leveled surface facing the prevailing wind.
- (2) Center nose wheel and set parking brake by depress the pilots or copilots brake pedals and pulling out the parking brake handle and turning through 90 degrees to lock the handle.

NOTE: Do not attempt to lock a parking brake by applying force to the parking brake handle.

The handle controls have only a valve, and cannot apply pressure to the brake system. To release the brakes, depress the brake pedals and turn and push the parking brake control in (Ref. to [32-40-00](#)).

NOTE: Do not set the parking brakes at low ambient temperature, when an accumulation of moisture may cause the brakes to freeze, or when they become hot from severe use.

- (3) Chock main gear wheels.
- (4) Assure that flaps are retracted.
- (5) Electrically ground airplane, by connecting ground cable.
- (6) Install the following covers and blanks:
 - Pitot Tube Covers
 - OAT Sensor Cover
 - Ice Detector Cover
 - Static Port Covers
 - Engine Intake Blanks
 - Starter/Generator Inlet Scoop Blanks
 - Inertial Separator Outlet Blanks
 - Exhaust Stack Covers
 - ACM Inlet Scoop Blanks
 - Nose Fan Outlet Blanks
 - Tail Stand.
- (7) Install the static wick covers on the following surfaces:
 - Forward wing flaps
 - Ailerons
 - Rudder.
- (8) Install Gust Locks (Ref. to Fig. [201](#)).
- (9) Close and lock cabin door.
- (10) Close and lock the baggage door.
- (11) Install the propeller restrainer.



MM_101100-201

Fig. 201 - Gust Lock Installation

EFFECTIVITY:

10-11-00

Page 203
Dec. 15/09

INTENTIONALLY LEFT BLANK

STORAGE - MAINTENANCE PRACTICES

1. General

- A. The storage procedures are intended to protect the airplane from deterioration while it is not in use. The primary objectives of these measures are to prevent corrosion and damage from exposure to the elements.
- B. Tools and Equipment

NOTE: The following tools and equipment or equivalent are required to properly store the airplane.

NOMENCLATURE	PART NUMBER	MANUFACTURER
Nose Jacking Pad	80-909157-801	Piaggio
Wing Jacking Pads	80-909101-803/804	Piaggio
Nose Tripod Jack	02-0517-0132	Tronair
Wing Tripod Jacks	02-7812-0100	Tronair
Tow Bar	80-909105	Piaggio
Pitot Tube Covers	80-909174-401	Piaggio
Ice Detector Cover	80-909174-401	Piaggio
OAT Sensor Cover	80-909174-401	Piaggio
Propeller Restrainers	80-909168-401	Piaggio
Angle of Attack Transducer Cover	123-149	Teledyne Avionics
Engine Intake Blanks	80-909152-401	Piaggio
Engine Oil Cooler Inlet Scoop Blanks	80-909171-401	Piaggio
Inertial Separator Outlet Blanks	80-909171-401	Piaggio
Starter/Generator Inlet Scoop Blanks	80-909171-401	Piaggio
Exhaust Stack Covers	80-909170-401	Piaggio
Wheel Chocks	80-909135-401	Piaggio
Wheel Chocks	99-9028-6000	Tronair
Control Gust Locks	80-115324-803	Piaggio
Static Port Covers	80-909196-401	Piaggio
Mooring Pad (Fuselage)	80-909158-801	Piaggio
Mooring Pads (Wings)	80-909159-801	Piaggio
Mooring Cable (Fuselage)	80-909192-403	Piaggio
Mooring Cable (Wings)	80-909192-405	Piaggio
Ground Cable (Electrical)	Not specified	Piaggio
Fuel	Ref. to Chapter 12	
Interior Cleaning Products	Ref. to Chapter 12	
Exterior Cleaning Products	Ref. to Chapter 12	
Hydraulic Fluid	Ref. to Chapter 12	
Seat Protective Covers	Not specified	Piaggio
Toilet Maintenance Practices	Ref. to Chapter 12	

(Cont'd)

NOMENCLATURE	PART NUMBER	MANUFACTURER
Windshield Protective Covers	Not specified	Piaggio
AOA Transducer Cover	123-1515	Teledyne Avionics
Window Protective Covers	Not specified	Piaggio
ACM Inlet Scoop Blank	80-909195-401	Piaggio
Nose Fan Outlet Blanks	Not specified	Piaggio
Tail Stand	80-909160-401	Piaggio
or		
Tail Stand	03-5813-0000	Tronair
Static Wick Covers	80-909175-801	Piaggio
Static Wick Covers	80-909175-801	Piaggio

2. Storage

CAUTION: THE AIRPLANE MUST BE IN AIRWORTHY CONDITION PRIOR TO STORAGE.

A. Three are the types of storage:

- Flyable Storage: 7 days to 30 days.
- Prolonged Storage: 30 days to 3 months.
- Indefinite Storage: More than 3 months.

3. Flyable Storage (7 days to 30 days)

A. Parking

- (1) Park airplane in hangar, if possible. If airplane is parked outside, position on leveled surface, facing prevailing wind.
- (2) Chock main gear wheels.
- (3) Center nose wheel. Set the parking brakes.

CAUTION: DO NOT SET THE PARKING BRAKES AT LOW AMBIENT TEMPERATURE, WHEN AN ACCUMULATION OF MOISTURE MAY CAUSE THE BRAKES TO FREEZE, OR WHEN THEY BECOME HOT FROM SEVERE USE.

B. Exterior Fuselage

- (1) Install the following covers, blanks and pads:
 - Pitot Tube Covers
 - Ice Detector Cover
 - Static Port Covers
 - OAT Sensor Cover
 - Angle of Attack Transducer Cover

- Mooring Pad (Fuselage)
 - Mooring Pads (Wings)
 - ACM Inlet Scoop Blank
 - Nose Fan Outlet Blanks
 - Tail Stand.
- (2) Install the static wick covers on the following surfaces:
 - Forward wing flaps
 - Ailerons
 - Rudder.
 - (3) Ensure that all access doors and panels are closed and secured.
 - (4) Close and lock cabin door.
 - (5) Secure the airplane to ground by mooring cable.

C. Engines

NOTE: Refer to P&WC Maintenance Manual, Part 72-00-00

- (1) Install the blanks of: engine intake, engine oil cooler inlet scoop, engine exhaust stacks, starter/generator inlet scoop and inertial separator outlet

D. Fuel System

- (1) Fuel airplane to capacity using approved fuel with anti-ice additive mixed in normal proportions (Ref. to Chapter 12).
- (2) Close fuel Shut-Off valves.

E. Flight Control System

- (1) Install control gust locks.
- (2) Ensure that flaps are retracted.

F. Electrical System

- (1) Electrically ground airplane by connecting ground cable.
- (2) Disconnect the battery (Refer to Chapter 24-00-00).

G. Propellers

NOTE: Refer to Hartzell Maintenance Manual

- (1) Remove dirt, oil and insects accumulation from propellers.
- (2) Restrain propellers to prevent them from windmilling with no oil pressure (Ref. to Chapter 12).

4. Prolonged Storage (30 Days to 3 Months)

A. Parking

- (1) Park airplane in hangar, if possible. If airplane is parked outside, position on leveled surface, facing prevailing wind.
- (2) Center nose wheel. DO NOT set parking brakes.

B. Exterior Fuselage

- (1) Install the following covers, blanks and pads:
 - Pitot Tube Covers
 - Ice Detector Cover
 - Static Port Covers
 - OAT Sensor Cover
 - Angle of Attack Transducer Cover
 - ACM Inlet Scoop Blank
 - Nose Fan Outlet Blanks
- (2) Install the static wick covers on the following surfaces:
 - Forward wing flaps
 - Ailerons
 - Rudder.
- (3) Ensure that all access doors and panels are closed and secured.
- (4) Close and lock cabin door and baggage compartment door.
- (5) Attach red tag to cabin door handle with the following notation: AIRCRAFT PREPARED FOR PROLONGED STORAGE (31 DAYS TO 3 MONTHS)

C. Engines

NOTE: Refer to P&WC Maintenance Manual, Part 72-00-00

- (1) Install the blanks of: engine intake, engine oil cooler inlet scoop, engine exhaust stacks, starter/generator inlet scoop and inertial separator outlet.

D. Fuel System

- (1) Close fuel Shut-Off valves.
- (2) Fuel airplane to capacity using approved fuel with anti-ice additive mixed in normal proportions (Ref. to Chapter 12).

E. Flight Control System

- (1) Ensure that flaps are retracted.
- (2) Ensure that all control surfaces are in neutral position.
- (3) Install control gust locks.

F. Electrical System

- (1) Remove the battery.

G. Propellers

NOTE: Refer to Hartzell Maintenance Manual

- (1) Remove dirt, oil and insect accumulation from propellers.
- (2) Restrain propellers to prevent them from windmilling with no oil pressure (Ref. to Chapter 12).

H. Oxygen System

- (1) Remove floor panel No 231 ELF and close the ON/OFF bottle lever in OFF position.

I. Interior Fuselage

- (1) Clean interiors (Ref. to Chapter 12).
- (2) Install protective covers over all seats.

J. Rear Lavatory

- (1) Remove toilet tank assembly and empty.
- (2) Back flush tank assembly filter and disinfect.
- (3) Disinfect toilet.
- (4) Install toilet tank assembly, do not precharge.

NOTE: The toilet and toilet tank assembly must be cleaned and disinfected to preclude bacterial growth during storage.

- (5) Empty wash bowl waste tank and water holding tank.
- (6) Disinfect wash bowl and waste tank to preclude bacterial growth during storage.
- (7) Ensure that water tank is empty and hot water heater is disabled.

K. Windshield and Windows

CAUTION: USE EXTREME CARE NOT TO SCRATCH OR GOUGE WINDSHIELD AND WINDOWS.

- (1) Clean windshield and windows internally and externally. (Ref. to Chapter 12).
- (2) Place windshield and window protective covers.

L. Avionic Equipment

- (1) Clean and cover any equipment sensitive to dust or moisture and take any additional precaution recommended by the manufacturer of such equipment.

M. Exterior Surfaces

- (1) Wash and wax airplane (Ref. to Chapter 12).

N. Landing Gear

- (1) Jack airplane (Ref. to Chapter 07).
- (2) Apply a light coating of hydraulic fluid to the exposed struts.

CAUTION: CHECK MAIN AND NOSE LANDING GEAR SHOCK STRUT PRESSURE EVERY 30 DAYS (REF. TO CHAPTER 12).

- (3) Replace serviceable tires with unserviceable tires (Ref. to Chapter 32).

CAUTION: WHEELS MUST BE ROTATED EVERY WEEK TO AVOID DAMAGES ON THEIR ASSEMBLY.

- (4) Electrically ground airplane by installing ground cable.

5. Indefinite Storage (More Than 3 Months)

A. Parking

- (1) Park airplane in hangar, if possible. If airplane is parked outside, position on flat surface, facing prevailing wind.
- (2) Center nose wheel. DO NOT set parking brakes.

B. Exterior Fuselage

- (1) Install the following covers, blanks and pads:
 - Pitot Tube Covers
 - Ice Detector Cover
 - Static Port Covers
 - OAT Sensor Cover
 - Angle of Attack Transducer Cover
 - ACM Inlet Scoop Blank
 - Nose Fan Outlet Blanks
- (2) Install the static wick covers on the following surfaces:
 - Forward wing flaps
 - Ailerons
 - Rudder.
- (3) Ensure that all access doors and panels are closed and secured.
- (4) Close and lock cabin door and baggage compartment door.
- (5) Attach red tag to cabin door handle with the following notation: "AIRCRAFT PREPARED FOR INDEFINITE STORAGE (MORE THAN 3 MONTHS)"

C. Engine

NOTE: Refer to P&WC Maintenance Manual, Part 72-00-00

- (1) Install the blanks of: engine intake, engine oil cooler inlet scoop, engine exhaust stacks, starter/generator inlet scoop and inertial separator outlet.

D. Fuel System

- (1) Defuel completely the airplane (Ref. to Chapter 12).
- (2) Drain completely the system and the tanks.
- (3) Shut-Off valves open.

E. Electrical System

- (1) Remove the battery.

F. Oxygen System

- (1) Clean pilot and copilot masks.
- (2) Remove floor panel No 231 ELF and close the ON/OFF bottle lever in OFF position.

G. Hydraulic System

- (1) Fill the hydraulic reservoir to operational level and inspect the system for leaks.

H. Interior Fuselage

- (1) Install protective covers over all seats.
- (2) Clean interiors (Ref. to Chapter 12).

I. Rear Lavatory

- (1) Remove toilet tank assembly and empty.
- (2) Back flush tank assembly filter and disinfect.
- (3) Disinfect toilet.
- (4) Install toilet tank assembly, do not precharge.

NOTE: The toilet and toilet tank assembly must be cleaned and disinfected to preclude bacterial growth during storage.

- (5) Empty wash bowl waste tank and water holding tank.
- (6) Disinfect wash bowl and waste tank to preclude bacterial growth during storage.
- (7) Ensure that water tank is empty and hot water heater is disabled.

J. Loose Tools and Equipment

- (1) Remove and store in a room of low humidity.

K. Windshield and Windows

WARNING: USE EXTREME CARE NOT TO SCRATCH OR GOUGE WINDSHIELD AND WINDOWS.

- (1) Clean windshield and windows internally and externally (Ref. to Chapter 12).
- (2) Place windshield and window protective covers.

L. Avionic Equipment

- (1) Clean and cover any equipment sensitive to dust or moisture and take any additional precaution recommended by the manufacturer of such equipment.

M. Propellers

NOTE: Refer to Hartzell Maintenance Manual

N. Engine Fire Extinguisher System

- (1) Remove the fire extinguisher bottle cartridges (Ref. to Chapter 26-20-00).

O. Flight Control System

- (1) Ensure that flaps are retracted.
- (2) Ensure that all control surfaces are in neutral position.
- (3) Install control gust locks.

P. Exterior Surfaces

- (1) Wash and wax airplane (Ref. to Chapter 12).

Q. Landing Gear

- (1) Jack airplane (Ref. to Chapter 07).
- (2) Apply a light coating of hydraulic fluid to the exposed stens.

CAUTION: CHECK MAIN AND NOSE LANDING GEAR SHOCK STRUT PRESSURE EVERY 30 DAYS (REFER TO CHAPTER 12).

- (3) Replace serviceable tires with unserviceable tires (Ref. to Chapter 32).

CAUTION: WHEELS MUST BE ROTATED EVERY WEEK TO AVOID DAMAGES ON THEIR ASSEMBLY.

- (4) Electrically ground airplane by installing ground cable.

MOORING - MAINTENACE PRACTICES

1. Mooring

CAUTION: IS STRONGLY RECOMMENDED TO MORE THE AIRPLANE WHEN THE FOLLOWING CONDITION APPLY:
 - WIND MORE THAN 20 KNOTS IS EXPECTED.
 - AIRPLANE COMPLETELY REFUELED.

A. Tools and equipments

NOMENCLATURE	PART NUMBER	MANUFACTURER
Pitot Tube Covers	80-909174-401	Piaggio
Ice Detector Cover	80-909174-401	Piaggio
OAT Sensor Cover	80-909174-401	Piaggio
AOA Transducer Cover	123-1515	Teledyne Avionics
Propeller Restrainers	80-909168-401	Piaggio
Engine Intake Blanks	80-909152-401	Piaggio
Engine Oil Cooler Inlet Scoop Blanks	80-909171-401	Piaggio
Inertial Separator Outlet Blanks	80-909171-401	Piaggio
Starter/Generator Inlet Scoop Blanks	80-909171-401	Piaggio
Exhaust Stack Covers	80-909170-401	Piaggio
Wheel Chocks	80-909135-401	Piaggio
Wheel Chocks	99-9028-6000	Tronair
Control Gust Locks	80-115324-803	Piaggio
Mooring Pad (Fuselage)	80-909158-801	Piaggio
Mooring Pads (Wings)	80-909159-801	Piaggio
Mooring Cable (Fuselage)	80-909192-403	Piaggio
Mooring Cable (Wings)	80-909192-405	Piaggio
Static Port Covers	80-909196-401	Piaggio
Ground Cable (Electrical)	Not specified	Piaggio
Nose Fan Outlet Blanks	Not specified	Piaggio
Tail Stand or...	80-909160-401	Piaggio
Tail Stand	03-5813-0000	Tronair
ACM Inlet Scoop Covers	80-909195-401	Piaggio
Static Wick Covers	80-909175-801	Piaggio

B. Mooring Airplane (Ref. to Fig. 201)

- (1) Position airplane on leveled surface facing the prevailing wind.
- (2) Center nose wheel and set parking brake by depress the pilot's or copilot's brake pedals and pulling out the parking brake handle. Rotate the parking brake handle 90° clockwise to lock handle.

NOTE: Do not attempt to lock a parking brake by applying force to the parking brake handle. The handle controls have only a valve, and cannot apply pressure to the brake system. To release the brakes, depress the brake pedals, rotate the parking brake handle 90° counterclockwise and push the parking brake control in.

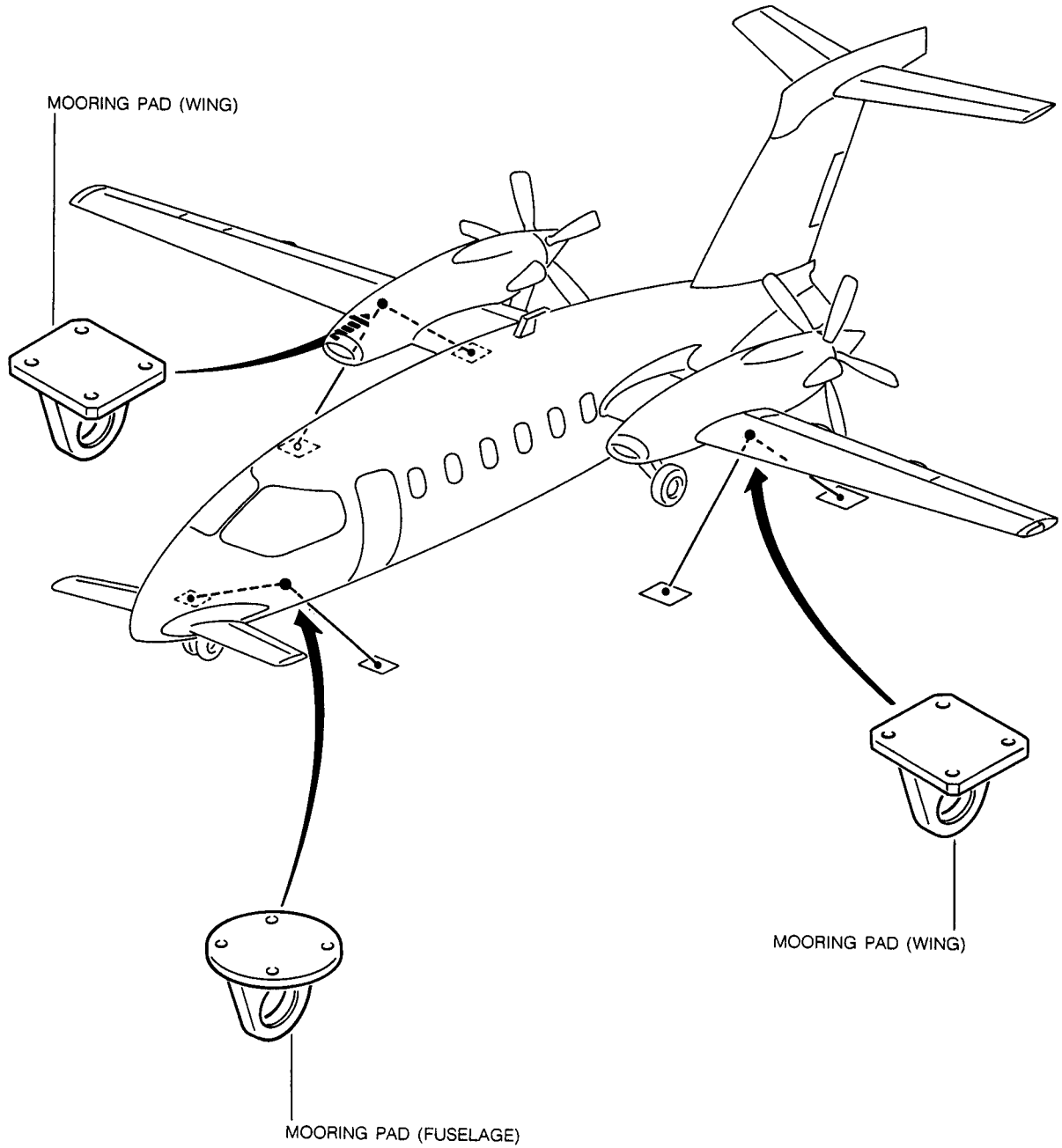
NOTE: Do not set the parking brakes at low ambient temperature, when an accumulation of moisture may cause the brakes to freeze, or when they become hot from severe use.

- (3) Chock main gear wheels.
- (4) Assure that flaps are retracted.
- (5) Electrically ground airplane, by connecting ground cable.
- (6) Install the control gust locks.
- (7) Install the following blanks and covers:
 - Pitot Tube Covers
 - Ice Detector Cover
 - Static Port Covers
 - OAT Sensor Cover
 - Engine Intake Blanks
 - Engine Oil Cooler Inlet Scoop Blanks
 - Inertial Separator Outlet Blanks
 - Starter/Generator Inlet Scoop Blanks
 - Exhaust Stack Covers
 - Nose Fan Outlet Blanks
 - ACM Inlet Scoop Covers.
- (8) Install the static wick covers on the following surfaces:
 - Forward wing flaps
 - Ailerons
 - Rudder.
- (9) Close and lock cabin door.
- (10) Close and lock the baggage door.
- (11) Install the propeller restrainers.
- (12) Install the tail stand.
- (13) Install the mooring pads.

CAUTION: SEVERE DAMAGE MAY OCCUR IF PADS ARE INSTALLED WITH NO CORRECT LENGTH SCREWS.

NOTE: Avoid overtightening the forward line.

- Three mooring pads, with eyes, are provided, one for each wing and one for the fuselage (see Fig. 201).
 - To moor the airplane install the pads and tie down the airplane at all three points.
 - If extreme weather is anticipated, it is advisable to nose the airplane into the wind.
- (14) Install the mooring cables.



MM_102000-201

Fig. 201 - Mooring Airplane

EFFECTIVITY:

10-20-00

INTENTIONALLY LEFT BLANK

STORAGE - MAINTENANCE PRACTICES

1. General

A. For prepare the airplane to service perform the following procedure.

2. Preparation for Service (7 to 30 days)

A. Interior and Exterior

(1) Clean airplane interior and exterior, as required (Ref. to Chapter 12).

(2) Remove the following covers, blanks and pads:

- Pitot Tube Covers
- Ice Detector Cover
- Static Port Covers
- OAT Sensor Cover
- Angle of Attack Transducer Cover
- Mooring Pad (Fuselage)
- Mooring Pads (Wings)
- ACM Inlet Scoop Blank
- Nose Fan Outlet Blanks
- Tail Stand.

(3) Remove the static wick covers from the following surfaces:

- Forward wing flaps
- Ailerons
- Rudder.

(4) Remove the chock from the main gear wheels.

(5) Remove the mooring cables.

B. Engines

NOTE: Refer to P&WC Maintenance Manual, Part 72-00-00

(1) Remove the blanks from: engine intake, engine oil cooler inlet scoop, engine exhaust stacks, starter/generator inlet scoop and inertial separator outlet.

C. Fuel System

(1) Drain off all water of the fuel system drain points (Ref. to Chapter 12-10-07).

(2) Check fuel anti-ice additive for proper concentration (Ref. to Chapter 12-10-07).

CAUTION: IF THE ANTI-ICE ADDITIVE CONCENTRATION DOES NOT MEET THE REQUIREMENTS, DEFUEL THE AIRPLANE AND REFUEL WITH APPROVED FUEL HAVING ANTI-ICE ADDITIVE IN THE REQUIRED PROPORTION.

(3) Open the fuel shut-off valves.

D. Flight Control System

- (1) Remove control gust locks.

E. Electrical System

- (1) Service and connect battery (Ref. to Chapter 12).

F. Propellers

NOTE: Refer to Hartzell Maintenance Manual

- (1) Remove restrainers.

G. Servicing

- (1) Check the following items and service if required (Ref. to Chapter 12).
 - (a) Hydraulic package - Check oil level.
 - (b) Tires - Check for proper pressure.
 - (c) Engine oil system - Check for oil level.
- (2) Perform daily inspection in accordance with the Airplane Pilot's Operating-Handbook.

H. Oxygen System

- (1) Check the pressure of the oxygen bottle by means the pilot gage.

3. Preparation For Service (31 Days to 3 Months).

A. Ground Connection

- (1) Electrically unground airplane by removing ground cable.

B. Landing Gear

- (1) Apply lubricating oil film on struts and actuators (Ref. to Chapter 12).
- (2) Check landing gear shock strut pressure (Ref. to Chapter 12).
- (3) Remove unserviceable tires and install serviceable tires (Ref. to Chapter 32).
- (4) Check tire proper pressure.
- (5) Unjack the airplane (Ref. to Chapter 07)

C. Engines

NOTE: Refer to P&WC Maintenance Manual, Part 72-00-00

- (1) Remove the blanks from: engine intake, engine oil cooler inlet scoop, engine exhaust stacks, starter generator inlet scoop and inertial separator outlet.
- (2) Fill the engine oil tank with approved oil if necessary.

D. Fuel System

- (1) Drain off all water of the fuel system drain points (Ref. to Chapter 12-10-07).
- (2) Check fuel anti-ice additive for proper concentration (Ref. to Chapter 12-10-07).

CAUTION: IF THE ANTI-ICE ADDITIVE CONCENTRATION DOES NOT MEET THE REQUIREMENTS, DEFUEL THE AIRPLANE AND REFUEL WITH APPROVED FUEL HAVING ANTI-ICE ADDITIVE IN THE REQUIRED PROPORTION.

- (3) Open the fuel shut-off valves.
- (4) Fuel the airplane as required (Ref. to Chapter 12).
- (5) Check airplane for leaks (Ref. to Chapter 28). Repair leaks as necessary.

E. Flight Control System

- (1) Remove control gust locks.

F. Electrical System

- (1) Service and install the battery (Ref. to Chapter 24-00-00).

G. Propellers

NOTE: Refer to Hartzell Maintenance Manual

- (1) Remove restrainers.

H. Oxygen System

- (1) Remove floor panel No 231 ELF and open the ON/OFF bottle lever in ON position.
- (2) Check pressure on bottle pressure gage and refill if necessary (Ref. to Chapter 12).
- (3) Check line pressure (70 ±10 PSIG) (Ref. to Chapter 35).
- (4) Perform passenger mask drop test (Ref. to Chapter 35).

I. Environmental Control System/Pressurization System

- (1) Refill the lubricating ECS oil.

J. Hydraulic System

- (1) Check hydraulic system for leaks.
- (2) Check Hydraulic Package oil level (Ref. to Chapter 12).

K. Interior Fuselage

- (1) Remove seat protective covers and clean interior as required (Ref. to Chapter 12).

L. Rear Lavatory

- (1) Disinfect toilet bowl assembly and toilet tank assembly. Precharge toilet tank assembly.
- (2) Disinfect wash bowl and wash bowl waste tank.
- (3) Fill wash bowl water holding tank with water. Ensure that hot water heater is operative.

M. Windshield and Windows

CAUTION: DO NOT GOUGE OR SCRATCH WINDSHIELD OR WINDOWS.

- (1) Remove the protective cover from windshield and windows.

N. Exterior Fuselage

- (1) Remove the following covers and blanks:

- Pitot Tube Covers
- Ice Detector Cover
- Static Port Covers
- OAT Sensor Cover
- Angle of Attack Transducer Cover
- ACM Inlet Scoop Blank
- Nose Fan Outlet Blanks

- (2) Remove the static wick covers from the following surfaces:

- Forward wing flaps
- Ailerons
- Rudder.

- (3) Ensure that red tags are removed and access doors and panels are closed and secured.

- (4) Clean and wax exterior as required (Ref. to Chapter 12).

O. Inspection

- (1) Perform daily inspection in accordance with the Airplane Pilot's Operating-Handbook.

4. Preparation For Service Indefinite Storage (More than 3 Months)

A. Ground Connection

- (1) Electrically unground airplane by removing ground cable.

B. Landing Gear

- (1) Apply lubricating oil film on struts and actuators (Ref. to Chapter 12).
- (2) Check landing gear shock strut pressure (Ref. to Chapter 12).
- (3) Remove unserviceable tires and install serviceable tires (Ref. to Chapter 32).
- (4) Check tire proper pressure.
- (5) Remove airplane from jacks (Ref. to Chapter 07).

C. Engines

NOTE: Refer to P&WC Maintenance Manual, Part 72-00-00

- (1) Remove the blanks from: engine intake, engine oil cooler inlet scoop, engine exhaust stacks, starter/generator inlet scoop and inertial separator outlet.
- (2) Fill the engine oil tank with approved oil as required.

D. Fuel System

- (1) Fuel the airplane as required (Ref. to Chapter 12).
- (2) Check airplane for leaks (Ref. to Chapter 28). Repair leaks as necessary.
- (3) Perform a pump pressure check.

E. Flight Control System

- (1) Remove control gust locks.

F. Electrical System

- (1) Service and install the battery (Ref. to Chapter 24-00-00).

G. Propellers

NOTE: Refer to Hartzell Maintenance Manual

- (1) Remove restrainers.

H. Engine Fire Extinguisher System

- (1) Install the fire extinguisher bottle cartridges (Ref. to Chapter 26-20-00).

I. Oxygen System

- (1) Remove floor panel N° 231 ELF and open the ON/OFF bottle lever in ON position.
- (2) Check pressure on bottle gage and refill if necessary (Ref. to Chapter 12).
- (3) Check line pressure (70 ±10 PSIG) (Ref. to Chapter 35).
- (4) Perform passenger mask drop test (Ref. to Chapter 35).

J. Environmental Control System/Pressurization System

- (1) Refill the lubricating ECS oil.
- (2) Check free rotation of the ACM rotating the fan by a small blunt article (Wooden pencil).

K. Hydraulic System

- (1) Check hydraulic system for leaks.
- (2) Check hydraulic package oil level (Ref. to Chapter 12).

L. Interior Fuselage

- (1) Remove seat protective covers and clean interior as required (Ref. to Chapter 12).

M. Rear Lavatory

- (1) Disinfect toilet bowl assembly and toilet tank assembly. Precharge toilet tank assembly.
- (2) Disinfect wash bowl and wash bowl waste tank.
- (3) Fill wash bowl water holding tank with water. Ensure that hot water heater is operative.

N. Windshield and windows

CAUTION: DO NOT GOUGE OR SCRATCH WINDSHIELD OR WINDOWS.

- (1) Remove the protective cover from windshield and windows.

O. Engine Fire Extinguisher System

- (1) Install Fire Extinguisher bottle Cartridges (Ref. to Chapter [26-20-00](#))).

P. Exterior Fuselage

- (1) Remove the following covers and blanks:

- Pitot Tube Covers
- Ice Detector Cover
- Static Port Covers
- OAT Sensor Cover
- Angle of Attack Transducer Cover
- ACM Inlet Scoop Blank
- Nose Fan Outlet Blanks

- (2) Remove the static wick covers from the following surfaces:

- Forward wing flaps
- Ailerons
- Rudder.

- (3) Ensure that red tags are removed and access doors and panels are closed and secured.

- (4) Clean and wax exterior as required (Refer to Chapter [12](#)).

Q. Inspection

- (1) Perform daily inspection in accordance with the Airplane Pilot's Operating-Handbook.

- (2) Perform test flight.